



[www.seventech.it](http://www.seventech.it)

Loading/Unloading Arms



## Products and services

We can design, build and service loading & unloading arms that conform to your specifications, no matter how unique they might be. Our loading systems are durable, reliable and easy to operate and maintain.

Available in stainless steel, carbon steel, aluminium and other materials, we meet your most demanding specifications of transferring various hazardous fluids.



Our range of products include:

### Loading and Unloading Arms

- Top Loading Arms
- Bottom Loading/Unloading Arms
- LPG Loading/Unloading Arms

### Swivel Joints

Swivel Joints having 360° rotation with positive sealing are used in loading arms, hose reels, floating suction and drain roofs.

### Accessories

- Loading Valve
- API Coupler
- Vacuum Breaker
- Valves, Deflector, Strainer
- Emergency Release System
- Sensors and Level Indication for Overfill
- Dry Disconnect Couplings
- Grounding System for static charges and earthing
- Arm Locking Device
- Drip Bucket Clamp-on type
- Drop Pipe Fittings
- Explosion proof Limit Switch
- Sight Glass Indicator

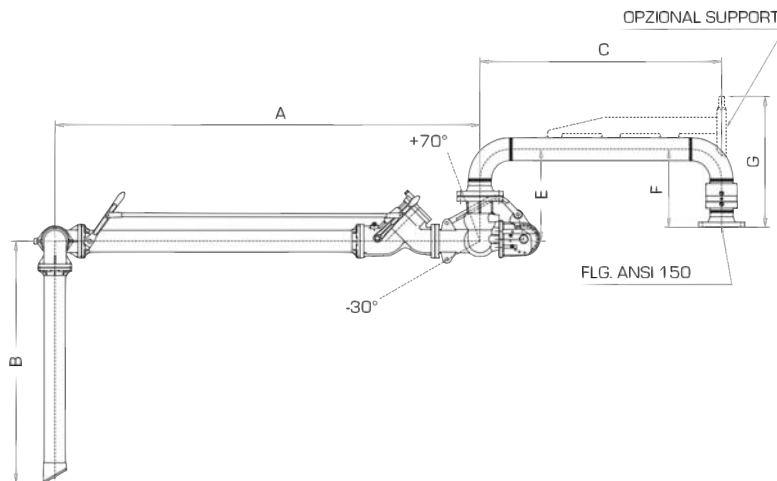


## Top Loading Arms

Top Loading Arms are used for loading road tankers or railcars through a connection at the highest point of the tank compartment.

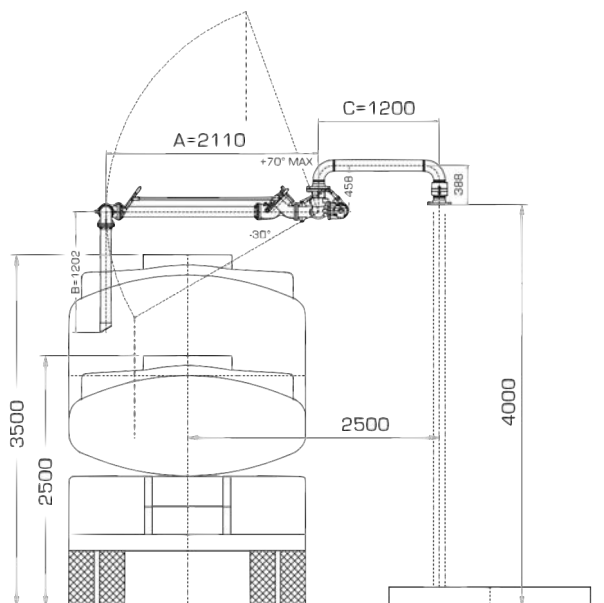
Through its operating range it can handle different positions and heights of the tankers or railcars. In order to deal with different fluids and situations, each TLA is specifically designed to meet the individual demands like open & closed (Flanged/Cone) loading. Available in material like carbon steel, stainless steel, aluminium and PTFE lined steel/stainless steel.

Available with standard and special accessories like loading valve, overspill device, control unit, vapour recovery system, etc.



Standard dimension

DIM	A	B	C	D	E	F	(G)	H	R
3"	2100	1200	1200	195	396	332	(550)	200	380
4"	2100	1200	1200	232	457	388	(650)	215	415
6"	2100	1200	1200	300	617	520	(750)	290	500

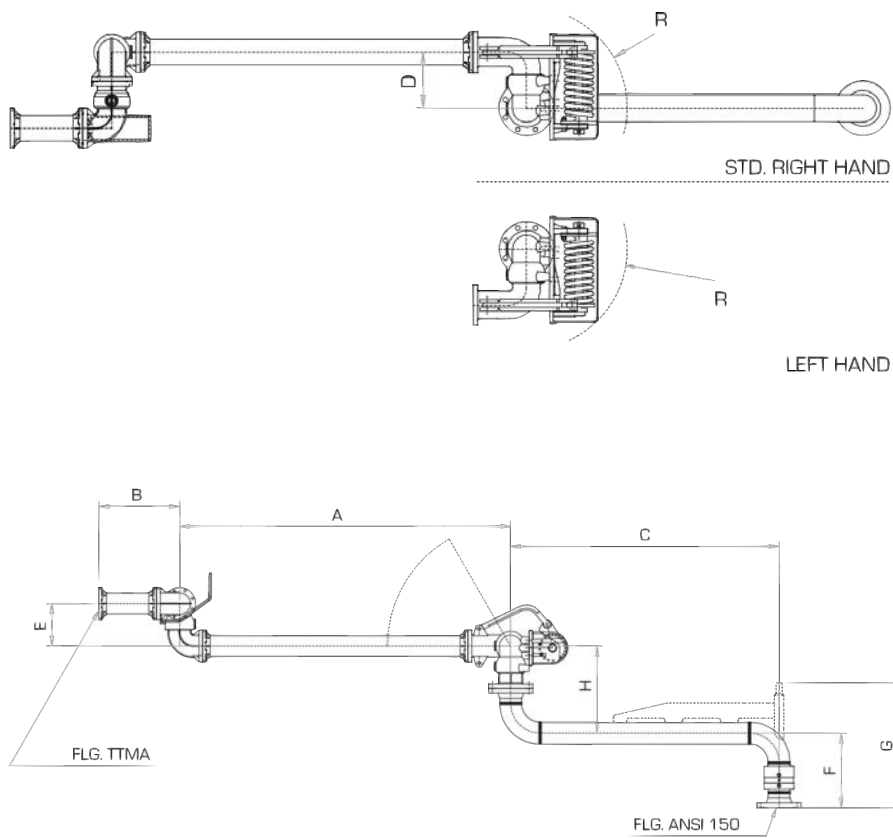


## Bottom Loading/Unloading Arms

Bottom Loading/ Unloading Arms are used for loading / unloading road tankers or railcars through a connection at the lowest point of the tank compartment. Through its operating range, it can handle the different connection positions and heights of the tankers or railcars.

In order to deal with the different fluids and situations each “BLA/BUA” are specifically designed to meet the individual demands and therefore available in material like carbon steel, stainless steel, aluminium and PTFE lined steel/stainless steel.

Available with standards and special accessories like dry-break coupling, emergency release system, control unit, API Coupler etc.



Standard dimension

DIM	A	B	C	D	E	F	(G)	H	R
3"	1700	420	1400	195	210	332	(550)	394	420
4"	1700	420	1400	235	220	388	(650)	454	420



## LPG Loading/Unloading Arms

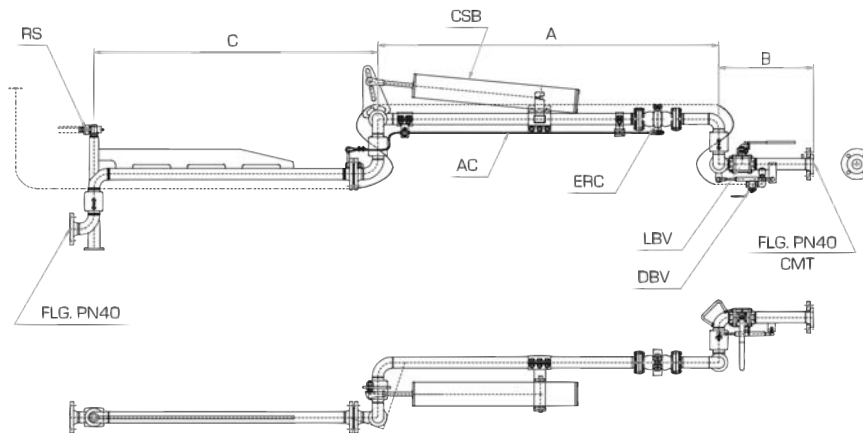
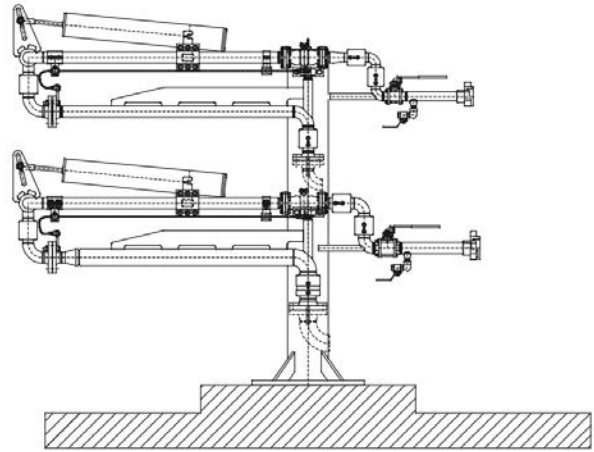
LPG Loading/Unloading Arms (LLA/LUA) are used for loading/unloading road tankers or rail cars pressurized at ambient temperature or at low temperature.

Available with standard accessories like emergency "BREAK AWAY" coupling for safety when tank or truck moves from its parked position while loading/unloading is in process & special accessories like no-spillage coupling, check valve etc.

Available with vapour recovery system on same stand post or with different stand post as per customer's requirement.

Available with automatic shut-off system & gas leak detection system for increased safety.

Available in carbon steel & stainless steel material.



Size: 1½" - 2" - 3" - 4"

	A	B	C
Dimension	1500	300	1200
	÷	÷	÷
	1800	600	1800

- LBV - Line ball Valve
- DBV - Drain ball valve 1½"
- CSB - Compression spring balance
- ERC - Emergency release coupler
- AC - Activating cable for ERC valve
- CMT - Connection to the mobile tank
- RS - Rotating support

Arm dimension and materials can be modified according to Customer requirements



[www.seventech.it](http://www.seventech.it)

e-mail Italia: [office@seventech.it](mailto:office@seventech.it)

e-mail Romania: [eurotehnic@micso.net](mailto:eurotehnic@micso.net)

Tel: + 39 055 4369030

Firenze Italia:

Via Benedetto Dei 5, int 8

Firenze 50125

Bucharest Romania:

B-dul Camil Ressu nr.15

Bucuresti Sector 3 Romania